

Human IgE (recombinant)

Description:

Recombinant human IgE antibody (hIgE λ), whose amino acid sequences are identical to the first-described IgE antibody from a myeloma patient with initials N.D, who was hospitalized in 1965 [1]. Thus, the antibody is also referred to as **IgND** [2] or **IgE (ND)** [3]. From the blood of patient N.D., a derived hIgE λ -producing myeloma cell line 266 BL or U-266 was developed [4]. The corresponding heavy and light chain sequences were determined and are published under Genbank entries [AH005278.2](#) [5,6] and [X51754](#) [7], respectively.

The recombinant antibody is produced transiently under serum-free conditions in optimized HEK293-cell system and purified through one-step purification with affinity chromatography.

Product-ID:	RP_SZ_361
Expression System:	Mammalian; HEK
Isotype:	Human IgE
Subclass:	hIgE λ 2
Protein Accession #:	HC: AH005278.2 translation (residues 19–574) LC: X51754 translation (residues 20–235)
Formulation:	Liquid, PBS, pH 7.4, 0.2 μ m sterile filtered
Concentration:	\geq 0.5 mg/mL
Purity:	\geq 90 % (CGE, reducing conditions) \leq 5 % aggregates (Analytical SEC)

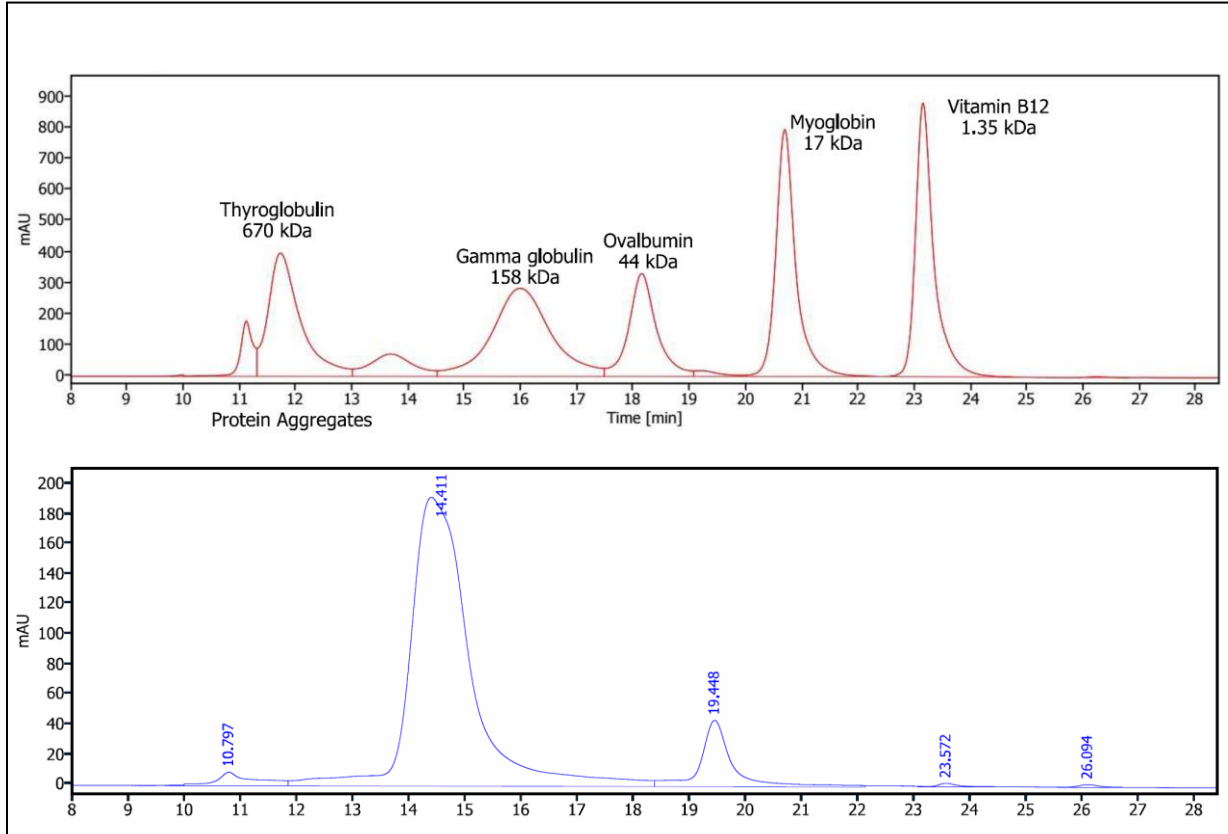
The product is for research use or for further manufacturing only.

Literature:

- [1] S. G. Johansson and H. Bennich, "Immunological studies of an atypical (myeloma) immunoglobulin.," *Immunology*, vol. 13, no. 4, pp. 381–94, 1967. PMID: [4168094](#).
- [2] S. G. Johansson, H. Bennich, and L. Wide, "A new class of immunoglobulin in human serum." *Immunology*. 1968;14: 265–72. PMID: [4170889](#).
- [3] H. Bennich and S. G. O. Johansson, "Structure and Function of Human Immunoglobulin E,," in *Symposium on Fundamental Cancer Research*, vol. 37, 1971, pp. 1–55. PMID: [5004326](#).
- [4] K. Nilsson, H. Bennich, S. G. Johansson, and J. Pontén, "Established immunoglobulin producing myeloma (IgE) and lymphoblastoid (IgG) cell lines from an IgE myeloma patient.," *Clin. Exp. Immunol.*, vol. 7, no. 4, pp. 477–89, 1970. PMID: [4097745](#).
- [5] J. H. Kenten et al., "Cloning and sequence determination of the gene for the human immunoglobulin ϵ chain expressed in a myeloma cell line," *Proc. Natl. Acad. Sci. U. S. A.*, vol. 79, no. 21 I, pp. 6661–6665, 1982. PMID: [6815656](#)
- [6] M. Seno et al., "Molecular cloning and nucleotide sequencing of human immunoglobulin epsilon chain cDNA.," *Nucleic Acids Res.*, vol. 11, no. 3, pp. 719–26, Feb. 1983. PMID: [6300763](#)
- [7] T. J. Vasicek and P. Leder, "Structure and expression of the human immunoglobulin lambda genes.," *J. Exp. Med.*, vol. 172, no. 2, pp. 609–620, Aug. 1990. PMID: [2115572](#).

Human IgE (recombinant) — Supplementary Data

Analytical SEC:



Analytical SEC of purified protein (bottom) in comparison with gel filtration protein standard (top).