

## HLA-DR mAb (L243), InVivoPure

Endotoxin level  $\leq 2$  EU/mg

### Description:

**The HLA-DR monoclonal antibody (clone L243) was purified from supernatant of HB-55TM L243 from the ATCC.\***

HLA-DR mAb (L243) is recommended for detection of a nonpolymorphic HLA-DR epitope 1-3 of human origin by IF, IHC(P) and FCM; non-cross-reactive with HLA-DQ or HLA-DP molecules. The HLA-DR antigen is expressed on B lymphocytes, activated T lymphocytes and NK cells, monocytes, macrophages, dendritic cells other antigen-presenting cells and progenitor cells [1].

This antibody is produced exclusively under serum-free conditions from hybridoma and purified with Protein-A or Protein-G affinity chromatography.

<b>Product-ID:</b>	<b>AK3605P</b>
<b>Clone:</b>	L243
<b>Immunogen:</b>	Animals were immunized with RPMI 8866 cells. Spleen cells were fused with NS-1 myeloma cells
<b>Host:</b>	Mouse
<b>Clonality:</b>	Monoclonal
<b>Isotype:</b>	IgG2a $\kappa$
<b>Formulation:</b>	Clear Liquid, PBS, pH 7.4, 0.2 $\mu$ m sterile filtered
<b>Concentration:</b>	$\geq 1.00$ mg/mL
<b>Purity:</b>	$\geq 90$ % (CGE, reducing conditions) $\leq 10$ % aggregates (analytical SEC)
<b>Endotoxin:</b>	$\leq 2$ EU/mg (LAL test)
<b>Storage:</b>	2 - 8 °C
<b>Recommended Isotype Control:</b>	Mouse IgG2a $\kappa$ Isotype Control (AK3399P)

**The product is for research use only and not for use in diagnostic or therapeutic procedures.**

**\*The ATCC trademark and trade name and any and all ATCC catalog numbers are trademarks of the American Type Culture Collection.**

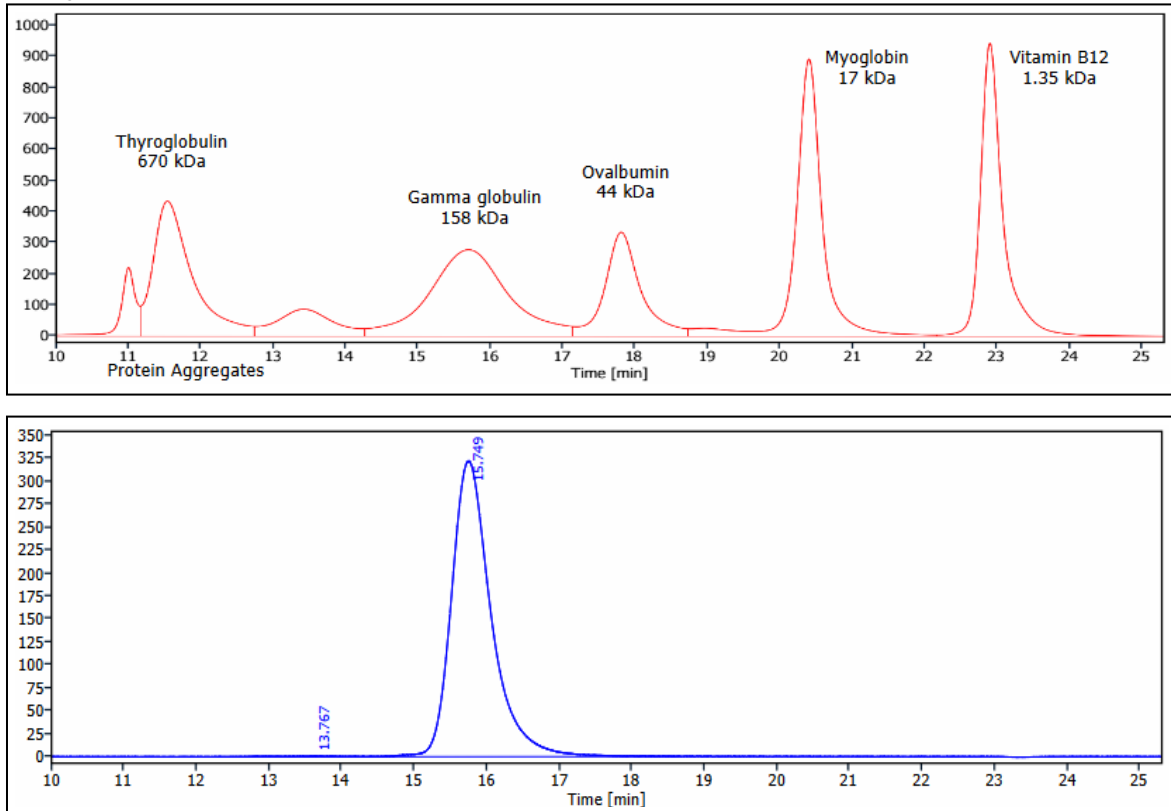
InVivo BioTech Services GmbH is certified to [ISO 9001](#) and [ISO 13485](#).

### Literature

- [1] Marsh SG, Albert ED, Bodmer WF, Bontrop RE, Dupont B, Erlich HA, Geraghty DE, Hansen JA, Hurley CK, Mach B, Mayr WR, Parham P, Petersdorf EW, Sasazuki T, Schreuder GM, Strominger JL, Svejgaard A, Terasaki PI, Trowsdale J. Nomenclature for Factors of the HLA System, 2004. Hum Immunol. 2005 May;66(5):571-636. doi: 10.1016/j.humimm.2005.02.002. Epub 2005 Mar 3. PMID: 15935895.

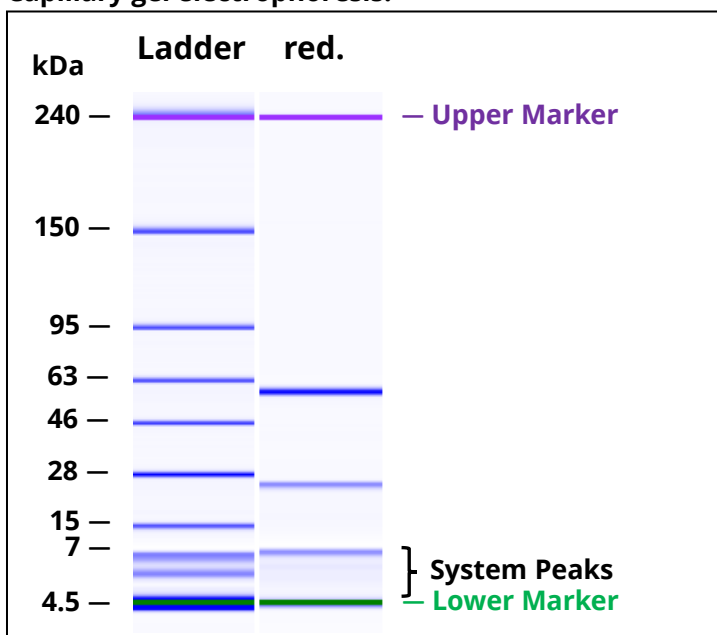
## HLA-DR mAb (L243), InVivoPure — Supplementary Data

### Analytical SEC:



Analytical SEC of purified protein (blue) in comparison with gel filtration standard (red).

### Capillary gel electrophoresis:



CGE of the purified protein under reducing (red.) conditions.